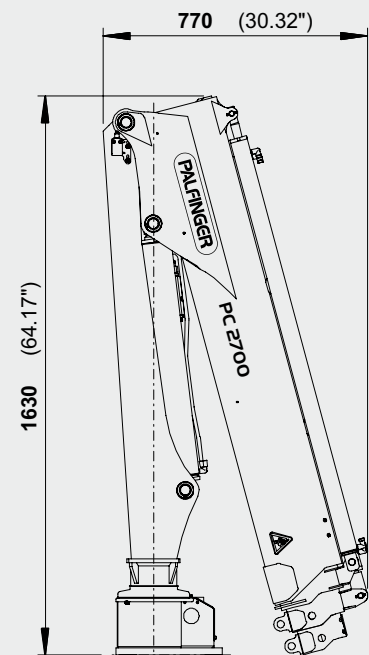
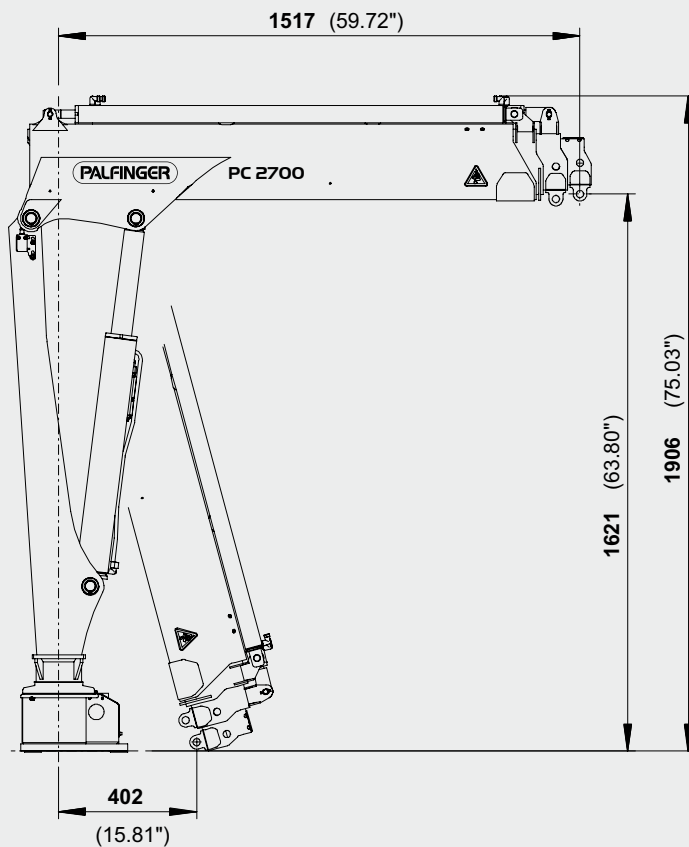


PC 2700 COMPACT

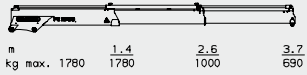


DIMENSIONS

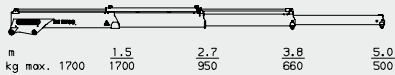


EXTENSION BOOM VARIATIONS

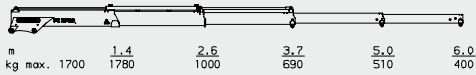
A



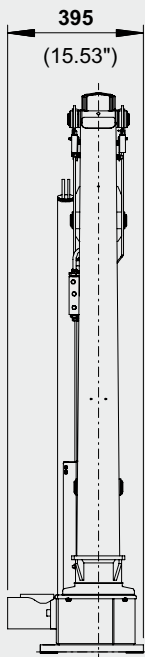
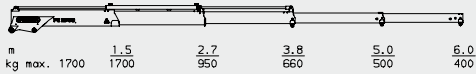
B



NON-CE – A V2



NON-CE – B V1



TECHNICAL SPECIFICATIONS (EN 12999 H1-B2)

Max. lifting moment	2.6 mt/25.8 kNm	19010 ft.lbs
Max. lifting capacity	2000 kg/19.6 kN	4400 lbs
Max. hydraulic outreach	5.0 m	16' 5"
Max. manual outreach	6.0 m	19' 8"
Slewing angle	325°	
Slewing torque	0.31 mt/3.0 kNm	2210 ft.lbs
Fitting space required (std.)	0.40 m	1' 4"
Width folded	0.77 m	2' 6"
Max. operating pressure	200 bar	2900 psi
Recommended pump capacity	9 l/min	2.4 US gal./min
Dead weight (std.)	207 kg	460 lbs